

# Foundation Cattle Co.

Production Sale

Sunday April 8, 2018 at 1:30 pm CST

Daviess County Livestock Market - Gallatin, MO



FCC

# Foundation Cattle Co.

Sunday April 8, 2018 at 1:30 pm CST - Daviess County Livestock Market - Gallatin, MO

## Foundation Cattle Company

Tim Reimer

32193 W 228th St.

Lawson MO 64062

Cell: 660-973-4080

timreimer@foundationcattlecompany.com

www.foundationcattlecompany.com

Follow on Facebook for up to date information year round. Found under Foundation Cattle Company!

### Sale Staff:

Tim Reimer, Sale Host 660-973-4080

Jerry Lehman, Auctioneer 573-999-4759

Brad McConahay, Consultant 641-344-9244

John Peterson, Consultant 402-873-2224

Brock Boyle, Consultant 712-880-1296

Scott Sandeen, Consultant 641-777-9153

Evan Kempker, Consultant 573-291-5146

Brett Sayre, Consultant 573-881-1876

Curt Rennison, Consultant 660-707-2640

Caleb Hibner, Herdsman 660-247-1128

### Sale Location:

Daviess County Livestock Market

912 W Grand, Gallatin MO 64640

Gallatin is in northwest Missouri, 22 miles northeast of Cameron, MO, on Missouri Highway 6 or 72 miles northeast of Kansas City, MO, on I-35 to Missouri Highway 6 or 131 miles south of Des Moines, IA, on I-35 South to Missouri Highway 13. Barn is located on W. Grand St., on the south side of the road. 8 Blocks west of the four way stop at the square on Hwy 13.

### Lodging:

Rooms are limited in Gallatin. If you are traveling from the North we recommend staying in Bethany, MO. If coming from the south or west, please stay in Cameron, MO. If you are traveling from the east, the best stop will be Chillicothe, MO.

### Terms of Sale:

Cattle sell under the respective terms and conditions of their representative breeds. Terms of sale are cash, good check (with proper ID), and/or Visa/Mastercard. All credit card transactions will incur a 3% processing fee, thus a \$1000 purchase will be charged \$1030. Payment to be made before cattle are loaded out. Announcements made on the auction block as well as updates made on the supplement sheet sale weekend will take precedence over the materials presented in this sale book.

### Sale Photography & Videography:

I would like to thank Trent & Evan Kempker for all their hard work in taking sale photos. Online video previews of this offering will be available at [www.foundationcattlecompany.com](http://www.foundationcattlecompany.com) as well as on facebook.

**Additional terms & conditions found on Page 29**

I would like to take a moment to personally welcome each of you to the offering. The cattle and genetics represented in this catalog represent a lifelong approach to mating cattle for consistency in type and function.

At FCC, we put more faith in breeding cattle by stacking **PROVEN COW FAMILIES & PROVEN SIREs** rather than mating based upon EPD values. We strongly believe that this approach results in a more consistent and uniform set of replacement females to put back in the herd! The Angus bloodlines utilized have a long history of proven low birth weight, calving ease genetics which still produces the easy fleshing maternal cow that made Angus cows the strong foundation base for cross breeding to best utilize the effects of Hybrid Vigor through Heterosis!

Study the pedigrees and you will notice that the cattle are backed by multiple generations of **PROVEN COW FAMILIES**, many lots are 3 plus generations deep of Foundation Donors which will add to the consistency and profitability of the product being offered. If you have any question about the offering feel free to give me a call or shoot me a text I would love to discuss the females and bulls being offered up on April 8<sup>th</sup>. **Cattle will be available for viewing all day Saturday until dark and again available all day Sunday until sale time at the sale site. Plan to join us sale day for a complimentary lunch!**

**Thank you for your consideration,**

**Foundation Cattle Company**

Tim Reimer 660-973-4080

Online Video Previews available at:

[www.foundationcattlecompany.com](http://www.foundationcattlecompany.com)

**LiveAuctions.TV**

**Online bidding assistance:**

Real time online bidding will be available at

[www.livauctions.tv](http://www.livauctions.tv). Bidders must pre-register on the LATV website and may watch and bid live via their high-speed internet connection.



*Lot 1*



*Lot 39 - 96C  
FCC Yukon 145Y & Rose 812U*

**E**



**OCC Unmistakable 946U**  
*Maternal Sibling to Lot 1*



**OCC General 794G**



**FCC Revolution Rose 2476**  
*Donor Dam of Lot 1*

**Embryos by 812U**

1 package of 3 embryos

**1**

**FCC Revolution Rose 812U**

9/23/08 - Reg. Angus - AAA 16700645

Basin Rainmaker 654X

Basin Rainmaker DS 380  
Basin Bardolene 423U

**OCC General 794G**

OCC Juanada 709V

Cole Creek Oscar 92R  
Juanada of Rollin Rock 0355

OCC Emblazon 854E

DHD Traveler 6807  
Dixie Erica of CH 1019

**FCC Revolution Rose 2476**

OCC Revolution Rose 887H

Rito 9Q4 of 1H1 Sasquatch  
OCC Revolution Rose 919E

Sells open

**1A**

OCC Focus 813F

OCC General 794G

**OCC Paxton 730P**

**FCC Revolution Rose 812U**

OCC Blackbird 736K

FCC Revolution Rose 2476

**1B**

**Embryos by 812U**

1 package of 3 embryos

OCC Practical 841P

OCC General 794G

**OCC Unbelievable 851U**

**FCC Revolution Rose 812U**

OCC Pollyanna 944H

FCC Revolution Rose 2476

Without a doubt, this is 1 of the top 5 females ever bred in the Foundation Cattle Company program! Her pedigree is very, very unique and you will not find many other females bred like her anywhere! BIG TIME opportunity here for a progressive breeder to get in on a phenotypic and genetic gem! She is a maternal sister to OCC Unmistakable and out of the Basin Rainmaker 654X son, OCC General 794G. OCC General is a maternal brother to the famed OCC Anchor 771A. 812U is about as feminine and angular fronted as you can make a female that has this much power! This is not a small cow and would work with many different sires! There is no need to be concerned. She is capable of breeding and carrying a natural calf as well. She has been flushed 7 times in her life time and avgD 6.5 good per flush. The OCC Paxton embryos would be 3/4 mates to OCC Unmistakable 946U and check out the foot-note on lot 42 bull to hear more about the OCC Unbelievable mating. I am betting she would cross extremely well with a lot of the bulls coming out of North Dakota. A really good son of this bull sells as Lot 39. DON'T miss her.

# Dixie Erica 934T



Lot 2

E



**OCC Dixie Erica 963H**  
Donor Dam of Lot 2



*Basin Rainmaker 654X*  
Foundation Sire



*OCC Emblazon 854E - The standard when it comes to producing powerful potent females.*

**2**

## FCC Dixie Erica 934T

2/18/07 - Reg. Angus - AAA 15956045

DHD Traveler 6807

QAS Traveler 23-4  
Bemindful Maid DHD o807

**OCC Emblazon 854E**

Dixie Erica of CH 1019

PBC 707 1M F0203  
Dixie Erica of CH 615

OCC Anchor 771A

DHD Traveler 6807  
OCC Juanada 709V

**OCC Dixie Erica 963H**

OCC Dixie Erica 907C

N Bar Emulation EXT  
Dixie Erica of CH 1019

**2A**

## Embryos by 934T

1 package of 3 embryos

Basin Rainmaker 654X

OCC Emblazon 854E

**OCC General 794G**

**FCC Dixie Erica 934T**

OCC Juanada 709V

OCC Dixie Erica 963H

Reg. Angus heifer calf at side by OCC Best Ever 722B, DOB 3/15/18.

FCC Dixie Erica 934T had a full brother in blood sell as a past high seller through one of Ohlde's sales, OCC Tremendous 619T. Tremendous sold to McCumber Angus in North Dakota and has had a big impact in their successful program. This FCC donor epitomizes the OCC program both in type and in pedigree. She is extremely stout, easy fleshing and powerful. She comes by it naturally. She is a spitting image of her dam, OCC Dixie Erica 963H. Pedigree reads like a Who's Who... She is an OCC Emblazon out of an OCC Anchor out of an EXT out of the famed Dixie Erica 1019 that has long been the base cow at Ohlde's. Ask Mark Mueller, Diamond M, in Kansas how he got along with some old school, simmy Black Bear embryos out of this FCC donor. The first bull calf out of one of his Black Bear, half blood, daughters commanded over 10,000 through his sale. She has been flushed 5 times in her life time and avgD 6.4 good per flush. She is still very fertile and if you are still concerned; then, you need to realize that she has a future replica selling along her side! I should not be offering these OCC General embryos out of this donor but here they are! Add Basin Rainmaker 654X to the "Who List" from above and it only gets better and even more interesting.

# The Juanada Tribe



**3**

## FCC Juanada 855S

2/11/06 - Reg. Angus - AAA 15606658

DHD Traveler 6807

QAS Traveler 23-4  
Bemindful Maid DHD 0807

**OCC Emblazon 854E**

Dixie Erica of CH 1019

PBC 707 1M F0203  
Dixie Erica of CH 615

OCC Anchor 771A

DHD Traveler 6807  
OCC Juanada 709V

**OCC Juanada 710K**

OCC Juanada 709Z

RR Hero 6267  
OCC Juanada 709V

Reg. Angus bull calf at side by OCC Best Ever 722B, DOB 1/5/18.

**4**

## FCC Juanada 854S

2/12/06 - Reg. Angus - AAA 15606659

DHD Traveler 6807

QAS Traveler 23-4  
Bemindful Maid DHD 0807

**OCC Emblazon 854E**

Dixie Erica of CH 1019

PBC 707 1M F0203  
Dixie Erica of CH 615

OCC Anchor 771A

DHD Traveler 6807  
OCC Juanada 709V

**OCC Juanada 710K**

OCC Juanada 709Z

RR Hero 6267  
OCC Juanada 709V

Due to calve 4/10/18 with a heifer by STF Beau 405C. Calf 1/2 Sim.

**3A**

## Embryos by 855S

1 package of 3 embryos

N Bar Emulation EXT

OCC Emblazon 854E

**OCC Great Plains 943G** FCC Juanada 855S

Dixie Erica of CH 1019

OCC Juanada 710K

**4A**

## Embryos by 854S

1 package of 3 embryos

OCC Focus 813F

OCC Emblazon 854E

**OCC Paxton 730P**

**FCC Juanada 854S**

OCC Blackbird 736K

OCC Juanada 710K

Here is the first of 2 OCC Emblazon daughters out of the famed OCC Juanada 710K cow. 855S has always been the slightly more feminine of these two sisters. Yet she is still super powerful at the same time. The offspring from this cow family are attractive, stout, square made and easy fleshing. They have style to burn. Don't miss her son selling as Lot 53. 855S sells with a cool made, OCC Best Ever bull calf at her side. She has been flushed 9 times in her life time and avgD 2.7 good per flush. She has never busted on a flush. But, not a big stimulator and makes 1 to 4 each time. I haven't tried it on her; but, through IVF you may still be able to produce a bunch of daughters. OCC Great Plains (EXT out of 1019) embryos sell too.

854S has always gotten the attention of the clubby guys who pass through. She is POWERFUL! These 2 donors selling are flush sisters to the Chloe Juanada 7009 donor that Coleman Angus in Montana has had great success with marketing embryos and progeny from! A maternal sister to these 710K daughters by EXT, Akers Juanada 9100, topped the Fall 2017 dispersion at A Cross Ranch for \$48,000 and went to Sanford Ranches in Texas. She has been flushed 12 times in her life time and avgD 7.5 good per flush. Her half blood simmental bull calf will be stout. Selling OCC Paxton embryos as well.

# The Juanada Tribe

## 5

### FCC Juanada 184Y

Fall 2011 - Reg. Angus - AAA Pending

OCC Focus 813F

Basin Rainmaker 654X  
Dixie Erica of CH 1019

**OCC Paxton 730P**

OCC Blackbird 736K

OCC Great Plains 943G  
OCC Blackbird 824G

OCC Emblazon 854E

DHD Traveler 6807  
Dixie Erica of CH 1019

**FCC Juanada 854S**

OCC Juanada 710K

OCC Anchor 771A  
OCC Juanada 709Z

1/2 Sim Bull calf at side by STF Beau 405C. DOB 3/25/18.

Definite Donor Potential Here! She combines the popular OCC Juanada 710K along with the proven Ohlde sires OCC Emblazon and OCC Paxton. Her dam is the proven donor that sells as lot 4. This cow's phenotype is what has drawn people to use Ohlde genetics as a base for crossbreeding! Stout, Easy Fleshing, Sound, Moderate, Productive and Attractive Cows. Her half blood simmental bull calf at side by STF Beau is REALLY Good! Full sib embryos to this cow sell as lot 4A! 184Y shouldn't be leaving the farm; but I wanted to offer several of my best..... So.....TAKE ADVANTAGE! Resulting calf will be a 1/2 Simmental.



Lot 5



**OCC Paxton 730P**  
Sire of Lot 5 and multiple Embryo Packages.

## 6

### FCC Juanada 109Y

Spring 2011 - Reg. Angus - AAA Pending

OCC Practical 841P

OCC Focus 813F  
OCC Juanada 968G

**OCC Unbelievable 851U**

OCC Pollyanna 944H

OCC Anchor 771A  
OCC Pollyanna 979F

OCC Paxton 730P

OCC Focus 813F  
OCC Blackbird 736K

**FCC Juanada 926W**

FCC Juanada 855S

OCC Emblazon 854E  
OCC Juanada 710K

Due to calve 4/10/18 with a bull by W/C Lock n Load 1143Y

Another descendant of the OCC Juanada 710K tribe. This is a feminine daughter of the proven OCC Unbelievable 851U bull that has had an incredible impact in the FCC program! She is a granddaughter of the Lot 3 donor, FCC Juanada 855S. Furthermore, this cow's dam would be a full sister in blood to the lot 5 cow selling here. My top simmental bull in last year's sale group was out of this cow. She is a worker and I wouldn't be scared to slip her into the donor pen as well! Sells with a bull calf at side by Sandeen's full brother to the popular W/C Loaded Up Resulting calf will be a 1/2 Simmental.



Lot 6



**FCC2 Juanada 644D**  
Granddaughter of Lot 6.  
She sells as Lot 35!

## 7

### FCC Juanada 60X

10/12/10 - Reg. Angus - AAA 18251582

OCC Practical 841P

OCC Focus 813F  
OCC Juanada 968G

**OCC Unbelievable 851U**

OCC Pollyanna 944H

OCC Anchor 771A  
OCC Pollyanna 979F

OCC Premium 701P

OCC Emblazon 854E  
OCC Dixie Erica 803F

**FCC Juanada 508U**

FCC Juanada 855S

OCC Emblazon 854E  
OCC Juanada 710K

1/2 Sim. Heifer calf at side by JAG Universal 115B. DOB 11/20/17.

Another granddaughter of the FCC Juanada 855S donor. She is the first of 4 fall calving pairs that will sell along with their calf at side! I had intentions of having this sale earlier in the winter and did not attempt to rebreed these 4 females. They have NOT been attempted to be bred on since calving and should be more than ready to go. I thought their new owners would value them more by having the opportunity to breed them to the bull of their choice for a January calf!? 60X sells with a very nice JAG Universal heifer calf at her side! Check out the Universal daughters that sell as lots 26 & 31 to realize what you will be getting here.



Lot 7

# The Juanada Tribe

## 8

### FCC Juanada 462B

Fall 2014 - Reg. Angus - AAA Pending

OCC Practical 841P  
**OCC Unbelievable 851U**  
 OCC Pollyanna 944H

OCC Focus 813F  
 OCC Juanada 968G

OCC Anchor 771A  
 OCC Pollyanna 979F

OCC Premium 701P  
**FCC Juanada 508U**  
 FCC Juanada 855S

OCC Emblazon 854E  
 OCC Dixie Erica 803F

OCC Emblazon 854E  
 OCC Juanada 710K

1/2 Sim. Bull calf at side by STF Beau 405C. DOB 3/5/18.

This is a full sister to the female that sells as lot 7.... just a younger version! If you look at the pedigree on the young fall bred heifer that sells as lot 37 through this sale; then, you will realize that FCC utilized a full brother to the lot 7 and 8 females as a cleanup bull a few years back. FCC Audi 385A now resides as a herd sire for Julie Maggart with Maggart Farms. This cow's bull calf at side by STF Beau is already a standout.



## 9

### FCC2 Juanada 645D

Spring 2016 - 1/2 Sim. - ASA Pending

GKS/SS Movin On X320  
**BWL Moving On 930A**  
 J&C/SS Bernadette

LMF Movin Forward  
 SS Magnificent Dreams

SS Goldmine L42  
 THSF Queens Gal

OCC Prestige 672P  
**Akers Juanada 9627**  
 OCC Juanada 710K

OCC Headliner 661H  
 OCC Dixie Erica 816B

OCC Anchor 771A  
 OCC Juanada 709Z

Due to calve 4/15/18 to OCC Bard 944B with a bull. Calf Reg. Angus.

Here is a well balanced half blood heifer that is a granddaughter of OCC Juanada 710K cow. This cow's dam by OCC Prestige has been a very consistent producer. A closely related heifer to this one also sells as lot 34. Both of these breeds are nice. Unfortunately, we weren't able to get any good video on this heifer; but, she was definitely worthy of it.



## 10

### FCC Dixie Erica 21X

3/22/10 - Reg. Angus - AAA 18251584

OCC Practical 841P  
**OCC Unbelievable 851U**  
 OCC Pollyanna 944H

OCC Focus 813F  
 OCC Juanada 968G

OCC Anchor 771A  
 OCC Pollyanna 979F

OCC No Fault 901N  
**FCC Dixie Erica 514U**  
 OCC Dixie Erica 963H

OCC Emblazon 854E  
 OCC Juanada 858F

OCC Anchor 771A  
 OCC Dixie Erica 907C

Due to calve 4/19/18 to STF Beau 405C with a bull.

This is another well bred OCC Unbelievable daughter that descends from a prominent foundation donor in the FCC program, FCC Dixie Erica 963H. Here is a perfect example of how utilizing these OCC bred angus females can work as a base for breeding percentage simmentals! True donor potential lies within Lot 10! Check out this cow's daughter that sells as lot 13 and her granddaughters that sell as lots 14 and 13A. It DOESN'T get any better than this! 21X mated to STF Beau will work.. Resulting calf will be a 1/2 Simmental



# The Dixie Erica Tribe



*Lot 11*



*Lot 60 - 8D  
Grandson of Lot 11*



*Lot 12*

**11**

**FCC Dixie Erica 163Y**

Fall 2011 - Reg. Angus - AAA Pending

OCC Emblazon 854E  
**FCC Tailor Made 874T**  
 OCC Dixie Erica 963H

SAV 8180 Traveler 004  
**MAC Dixie Erica 6078**  
 OCC Dixie Erica 808K

DHD Traveler 6807  
 Dixie Erica of CH 1019

OCC Anchor 771A  
 OCC Dixie Erica 907C

Sitz Traveler 8180  
 Boyd Forever Lady 8003

DHD Traveler 6807  
 OCC Dixie Erica 907C

1/2 Sim. Bull calf at side by Ruby SWC Battle Cry 431B. DOB 10/3/17.

You may be asking.... Who Is FCC Tailor Made? This cow's sire was a full brother to the Lot 2 donor selling, FCC Dixie Erica 934T. In my mind this cow already qualifies as being donor caliber! See the footnote on lot 7 above.... 163Y sells with an incredible half blood bull calf at side by Ruby SWC Battle Cry. Here is a perfect example of why Ruby Cattle Company's son by HOC Broker should be seeing widespread use throughout the industry! In the right market.... This bull calf will likely pay for the pair in less than 12 months. Check out 163Y's daughter selling as lot 12 and grandson as lot 60. Cow is open and has not been bred on.

**12**

**FCC Dixie Erica 631D**

Spring 2016 - Reg. Angus - AAA Pending

OCC Paxton 730P  
**OCC Unmistakable 946U**  
 FCC Revolution Rose 2476

FCC Tailor Made 874T  
**FCC Dixie Erica 163Y**  
 MAC Dixie Erica 6078

OCC Focus 813F  
 OCC Blackbird 736K

OCC Emblazon 854E  
 OCC Revolution Rose 887H

OCC Emblazon 854E  
 OCC Dixie Erica 963H

SAV 8180 Traveler 004  
 OCC Dixie Erica 808K

Due to calve 4/4/18 to OCC Bard 944D with a heifer.

Future DONOR here! I shouldn't be letting this one get away. I am not sure that I can breed an angus heifer that is much better than this one! Very complete in every way. Another example of how OCC Unmistakable has proven his value as a breeding bull. To top things off... she sells with a heifer calf at side. Resulting calf will be a Reg. Angus.



# Potent Maternal Matriarchs

## 13 **FCC2 Dixie Erica 360A**

Fall 2013 - 1/2 Sim. - ASA Pending

WLE Right On T058  
**Adkins Mr Right On**  
 WLE Sophie T727

SVF/NJC Built Right N48  
 WLE Sophie

CNS Dream On L186  
 WLE Sophie R727

OCC Unbelievable 851U  
**FCC Dixie Erica 21X**  
 FCC Dixie Erica 514U

OCC Practical 841P  
 OCC Pollyana 944H

OCC No Fault 901N  
 OCC Dixie Erica 963H

1/2 Sim. Heifer calf at side by FCC Corporal 552C. DOB 10/24/17.

Buy with Confidence here! This is a really nice, young, Mr Right On halfblood. Check out what this cow has already produced in her short life.... She has an incredible daughter that sells as lot 14 and a beautiful heifer calf that sells at her side! Read footnote on lot 7 above for more details on breeding info. The half blood FCC Corporal daughter at her side is a 3/4 sister to the lot 14 heifer. Her dam is the angus cow selling as lot 10. You are BUYING 2 for 1 Here!! Cow is open and has not been bred on.



## 14 **FCC2 Dixie Erica 654D**

Spring 2016 - 3/4 Sim. - ASA Pending

GKS/SS Movin On X320  
**BWL Moving On 930A**  
 J&C/SS Bernadette

LMF Movin Forward  
 SS Magnificent Dreams

SS Goldmine L42  
 THSF Queens Gal

Adkins Mr Right On  
**FCC2 Dixie Erica 360A**  
 FCC Dixie Erica 21X

WLE Right On T058  
 WLE Sophie T727

OCC Unbelievable 851U  
 FCC Dixie Erica 514U

PB Sim. Bull calf at side by W/C Lock n Load 1143Y. DOB 3/20/18.

Very Complete and everyone Loves a Baldy! The BWL Moving On simmental bull really hit a homerun here! Her dam sells as lot 13 and granddam as lot 10. She sells along with a cute red baldy bull calf by Sandeen's brother to W/C Loaded Up.



## 15 **FCC Revolution Rose 54X**

9/12/10 - Reg. Angus - AAA 18254003

OCC Emblazon 854E  
**OCC Kiddo 832K**  
 OCC Juanada 957F

DHD Traveler 6807  
 Dixie Erica of CH 1019

OCC Anchor 771A  
 OCC Juanada 775C

OCC Honesty 962H  
**FCC Revolution Rose 858S**

OCC Anchor 771A  
 OCC Dixie Erica 907C

Jauer 7111 Traveler 544 9239

GDAR Traveler 7111  
 Revolution Rose of RR 9239

1/2 Sim. Heifer calf at side by Ruby/SWC Battle Cry 431. DOB 3/19/18.

This is another angus cow in the offering that should probably be getting flushed! She looks just like her dam did when I was flushing her. (Long, stout, powerful, but yet attractive) At least the past 3 generations of females on her maternal side of the pedigree have served as donors for their respective operations! Sells with a nice Battle Cry heifer at her side.



# Revolution Rose Cow Family

## 16 FCC Revolution Rose 358A

Fall 2013 - Reg. Angus - AAA Pending

OCC Practical 841P

**OCC Unbelievable 851U**

OCC Pollyanna 944H

OCC Priority 882P

**FCC Revolution Rose 940W**

FCC Revolution Rose 678R

OCC Focus 813F  
OCC Juanada 968G

OCC Anchor 771A  
OCC Pollyanna 979F

OCC Eureka 865E  
OCC Dixie Erica 907C

OCC Nectar 702N  
FCC Revolution Rose 2475

1/2 Sim. Bull calf at side by Ruby/SWC Battle Cry 431. DOB 3/11/18.

Here is another solid angus female that will work great as an angus base. Moderate, Easy Keeping, Feminine and backed by the proven Revolution Rose cow family. Sells with a nice Battle Cry bull at her side.



## 17 FCC2 Revolution Rose 648D

Spring 2016 - 1/2 Sim. - ASA Pending

GKS/SS Movin On X320

**BWL Moving On 930A**

J&C/SS Bernadette

OCC Unbelievable 851U

**FCC Revolution Rose 118Y**

FCC Revolution Rose 520U

LMF Movin Forward  
SS Magnificent Dreams

SS Goldmine L42  
THSF Queens Gal

OCC Practical 841P  
OCC Pollyanna 944H

OCC Homer 650H  
FCC Revolution Rose 858S

1/4 Sim. Bull calf at side by OCC Best Ever 722B. DOB 3/12/18.

Good Luck finding many Sim/Angus halfbloods much more complete than this one! She is exactly what I am trying to produce with these half blood cattle. Very easy keeping, sound and maternal oriented! Her maternal brother sold two years ago to Evan and Trent Kemper. I guess that they have been satisfied enough with their purchase...that I was able to talk them into taking pictures and videos for this catalog! THANKS GUYS!



## 18 FCC2 Revolution Rose 640D

Spring 2016 - 3/4 Sim. - ASA Pending

GKS/SS Movin On X320

**BWL Moving On 930A**

J&C/SS Bernadette

HPF Steel Force Z316

**FCC2 Revolution Rose 421B**

FCC Revolution Rose 16X

LMF Movin Forward  
SS Magnificent Dreams

SS Goldmine L42  
THSF Queens Gal

SVF Steel Force S701  
AJE/JF Ant Joys Elegance

OCC Unbelievable 851U  
FCC Revolution Rose 518U

Due to calve 5/3/18 to OCC Best Ever 722B with a bull. Calf 3/8 Sim.

Something about this heifer really strikes me hard!? I guess it doesn't hurt that I know how solid the past 5 generations of females in her pedigree have been. She is a little greener than the majority of the heifers in this offering and a little later calving. But, I think she has tremendous potential. She is so angular through her front one-third that she always catches my attention.



# Elite Maternal Matriarchs



Lot 19



Ruby SWC Battle Cry



Lot 20

19

35X

Spring 2010 - Cross - Unregistered

Cowan's Ali 4M  
Frye The Messenger

Frye Miss Sandman 854R

NBH Polled Energizer  
FJH Countess 115H

Sandman

BHCS Heat Seeker 23

Tyler Thernes Cow

De Bull CAX  
BC Tex Shorthorn 23

1/2 Sim. Bull calf at side by Ruby/SWC Battle Cry 413B. DOB 3/26/18

I Bet you are wondering why this female resides at FCC!? Even though I have never been a clubby steer breeder and never will be... it Doesn't mean that I don't like looking at and analyzing the cows behind that industry as well. No offense intended; I think that we all realize that there is a very find line between Too Freaky and FREAK with FUNCTION. I happened to come across this female as a heifer in a pasture sale and absolutely FELL FOR HER! She was a FREAK in the fact that SHE WAS extremely Powerful, yet....SO MATERNAL AND SO SOUND that I had to own her. I just haven't utilized her like others would have. (my mistake!) She has just been bred to my cleanup Ohlde bred bulls and 2 of her resulting steers have been quite competitive for my niece. They both saw purple at her county fair in Iowa. Her Battle Cry bull calf is already looking GOOD. It only makes sense.....to let this female go while she is still in the prime of her life and give someone an opportunity to explore what I think her unlocked potential is! Never been TH tested nor flushed

20

FCC Juanada 311A

Spring 2013 - Cross - Unregistered

BK Ice Pick 472J

Irish Whiskey

NTC 615 Ever Ready

CKE Primetime 74F  
Pannell Miss 4072

Cunia 10

OCC Judge 679J

FCC Juanada 3214

OCC Juanada 831C

OCC Emblazon 854E  
OCC Dixie Erica 816B

DHD Traveler 6807  
Juanada of Rollin Rock 0355

1/2 Sim. Heifer calf at side by Ruby/SWC Battle Cry 413. DOB 3/13/18

A couple of years ago, I took the Griswold approach and used Irish Whiskey through IVF on a couple of my top Ohlde bred angus donors. The lot 20 and 21 females are what resulted from that attempt. 311A is big hiped and fairly stout. I made them with the strict intent to sell at a later date. I am not and not going to be a clubby breeder. No offense intended... it's just not for me! I probably haven't bred them the right way to date... But, I am curious just how good these 2 Ruby Battle Cry heifers may work as foundation Simmy heifers down the road!

# Powerful Cow Families

## 21 *FCC Blackcap Lady 310A*

Spring 2013 - Cross - Unregistered

BK Ice Pick 472J	CKE Primetime 74F
<b>Irish Whiskey</b>	Pannell Miss 4072
NTC 615 Ever Ready	Cunia 10
OCC Great Plains 943G	N Bar Emulation EXT
<b>FCC Blackcap Lady 680R</b>	Dixie Erica of CH 1019
FCC Blackcap Lady 3810	OCC Anchor 771A
	HA Blackcap Lady 0464

1/2 Sim. Heifer calf at side by Ruby/SWC Battle Cry 413. DOB 3/15/18

Another Irish Whiskey female that descends from a very typy and moderate angus donor. See lot 20 footnote for more explanation. As I mentioned above.. I think that both of these Ruby Battle Cry heifers could have a lot of potential! Both of these Battle Cry heifers came out weighing under 80 pounds and are already quite flashy!



## 22 *FCC Miss 75X*

Fall 2010 - Cross - Unregistered

OCC Emblazon 854E	DHD Traveler 6807
<b>OCC Kiddo 832K</b>	Dixie Erica of CH 1019
OCC Juanada 957F	OCC Anchor 771A
Black Bear (PB. Sim)	OCC Juanada 775C
<b>Derrer Farms Miss Bear 10K</b>	Libby's Black Bonus Bozo
Derrer's Fullback Cow	FF April Hope
	Angus
	Angus

1/2 Sim. Bull calf at side by STF Beau 405C. DOB 3/12/18

This is a young cow that I am quite reluctant to let go of. But, I only wanted to offer really good ones through this production sale... so, here you go! She can sure put a "Look in to them". Check out what she has in this sale alone. She has a super flashy whiskey influenced daughter selling as lot 23, a baldy son out of Sandeen's 1143Y bull selling as lot 68 and quite possibly her best prospect sells at her side. This STF Beau bull calf at her side is SUPER Stout and SUPER Cool!



**Lot 68 - 16D**  
W/C LnL 1143Y x Lot 22

## 23 *FCC Miss 540C*

Spring 2015 - Cross - Unregistered

Irish Whiskey	BK Ice Pick 472J
<b>Griswold Whiskey Son</b>	NTC 615 Ever Ready
OCC Miss Anchor 550R	OCC Anchor 771A
OCC Kiddo 832K	OCC Miss Rito 203 306Y
<b>FCC 75X</b>	OCC Emblazon 854E
Derrer's Miss Black Bear 10K	OCC Juanada 957F
	Black Bear (PB Sim.)
	Derrer's Fullback Cow

1/2 Sim. Bull calf at side by Ruby/SWC Battle Cry 413. DOB 3/13/18

This Irish Whiskey influenced female definitely catches your eye. She has style to burn. Her mother sells as lot 22 and her brother as lot 68. 540C sells with a Ruby SWC Battle Cry bull calf at her side.



# Powerful Cow Families

## 24

### FCC Miss 566C

Fall 2015 - 5/8 Sim. - ASA Pending

GKS/SS Movin On X320 LMF Movin Forward  
**BWL Moving On 930A** SS Magnificent Dreams  
 J&C/SS Bernadette SS Goldmine L42  
 THSF Queens Gal

OCC Anchor 771A DHD Traveler 6807  
**FCC 74X** OCC Juanada 709V  
 Derrers Miss Black Bear 10K Black Bear (PB Sim.)  
 Derrers Fullback Cow

3/4 Sim. Heifer calf at side by W/C Lock n Load 1143Y. DOB 3/17/18.

Study this heifer closely! This is another one that I will someday regret letting go of. If this female doesn't mature into the almost IDEAL simmental cross cow; then, I have misread this one!? She sells with a major bonus at her side.....a really, neat made W/C Lock N Load 1143Y heifer calf that appears to be from the same mold. Lot 24's dam is an OCC Anchor daughter and maternal sister to the lot 22 female.



Lot 24

## 25

### FCC Rosetta 160Y

Fall 2011 - Reg. Angus - AAA Pending

OCC Eureka 865E OCC Backstop 888B  
**OCC Priority 882P** Blackbird of RR 1204  
 OCC Dixie Erica 907C N Bar Emulation EXT  
 Dixie Erica of CH 1019

OCC Judge 679J OCC Emblazon 854E  
**FCC Rosetta 820U** OCC Dixie Erica 816B  
 Jauer 7318 DBL 3121 039 Ideal 7318 DBL Image 5002 15  
 Jauer Stretch 039 57

1/2 Sim. Bull calf at side by Ruby/SWC Battle Cry 413. DOB 3/10/18.

Here is the only Rosetta female in the sale. This cow's granddam is the highly proven and time tested Jauer 3121 donor. This cow family has a long history of producing solid bulls. "Duff's I Am Angus" is certainly at the top of that list. Her dam, FCC Rosetta 820U, is a Powerful female working in the Ruby Cattle program where she produced one of his top selling bulls a couple of years back that went to the Boles family in Iowa. Without a doubt, 160Y's HP Steel Force Z316 yearling son will headline my Simmental division in next years bull sale! Here is your chance to buy your next herd bull as a calf! I promise this Battle Cry bull calf will be a STUD!



Lot 25

## 26

### FCC2 Juanada 641D

Spring 2016 - 1/2 Sim. - ASA Pending

SVF Steel Force S701 CNS Dream On L186  
**JAG Universal 115B** SVF Sheza Beauty L901  
 AJE/JF Ant Joys Elegance 3C Macho M450 BZ  
 BHS JF Antoinettes Joy

OCC Priority 882P OCC Eureka 865E  
**FCC Juanada 817U** OCC Dixie Erica 907C  
 OCC Juanada 831C DHD Traveler 6807  
 Juanada of Rollin Rock 0355

3/4 Sim. bull at side by W/C Lock n Load 1143Y. DOB 3/26/18.

Don't miss this solid black heifer! I honestly CAN'T find a hole in her! "OK" yes her bull calf at side is a little chromed up; but, her next 10 shouldn't be! Remember That! I have a strong feeling this heifer is going to raise something GREAT down the road! Stout, big ribbed, sound and attractive best describe her. Her granddam is a 3/4 maternal sister to the famous OCC Anchor. So, her phenotype probably isn't by accident! To further solidify things, her mother has had one of the top calves in each of past 7 calf crops. Her sire is co-owned with Phil Lautner. You may wanna check with him for semen? Lot 31 is closely related on paper and in type.. Resulting calf will be a 3/4 Simmental.



Lot 26

# The Juanada Tribe

## 27 **FCC2 Juanada 636D** Spring 2016 - 1/2 Sim. - ASA Pending

SVF Steel Force S701	CNS Dream On L186
<b>HPF Steel Force Z316</b>	SVF Sheza Beauty L901
AJE/JF Ant Joys Elegance	3C Macho M450 BZ
	BHS JF Antoinettes Joy
OCC Priority 882P	OCC Eureka 865E
<b>FCC Juanada 191Y</b>	OCC Dixie Erica 907C
FCC Juanada 916T	OCC Paxton 730P
	OCC Juanada 831C

Due to calve 4/16/18 with a bull by OCC Bard 944B.

Here is a heifer that is a little greener; but, she has a very solid profile. She is really extended through that front end, flat topped and long bodied. Recently, the Kempker family in Missouri put this heifer's maternal sister by Battle Cry through an On-line show heifer sale. Her sire, HP Steel Force Z316, and the JAG Universal herd bull are actually flush brothers. They are full brothers to the Griswold and Yardley bull "GCC Nickels n Dimes".. Resulting calf will be a 1/4 Simmental.



Lot 27

## 28 **FCC2 Juanada 572C** Fall 2015 - 1/2 Sim. - ASA Pending

GKS/SS Movin On X320	LMF Movin Forward
<b>BWL Moving On 930A</b>	SS Magnificent Dreams
J&C/SS Bernadette	SS Goldmine L42
	THSF Queens Gal
OCC Transformer 987T	OCC Focus 813F
<b>FCC Juanada 194Y</b>	OCC Dixie Erica 963H
FCC Juanada 3214	OCC Judge 679J
	OCC Juanada 831C

Due to calve 4/30/18 with a heifer by OCC Bard 944B.

Unfortunately, we didn't get a video on this heifer. I assure you that she is as stout, soggy and attractive as her picture shows. That is one thing that I did make clear with Trent Kempker, who did a great job with the pictures and video. I did not want the cattle to be edited by computer. What they look like in the pasture is how I wanted them to look in the catalog. This heifer is going to calve a little later than ideal for many of you. But, she is going to have a heifer as a bonus and could be slid into a fall program nicely.. Resulting calf will be a 1/4 Simmental.



Lot 28

## 29 **FCC2 Juanada 317A** Spring 2013 - 1/2 Sim. - ASA Pending

LBS The Foreman 702T	GWS Ebony's Trademark 6N
<b>Ruby NFF Excalibur 002X</b>	LBS Ms G3
Ruby Rhythm 418P	PVF-BF BF26 Black Joker
	Double R She's The One K18
OCC General 794G	Basin Rainmaker 654X
<b>FCC Juanada 917T</b>	OCC Juanada 709V
FCC Juanada 682R	OCC Great Plains 943G
	FCC Juanada 3214

3/4 Sim. Bull calf at side by Ruby/SWC Battle Cry 413. DOB 3/17/18.

Check out the dam of lots 29, 30 & 31 and better yet, if you come to the sale.... Check out these females in person. These are 3 maternal sisters and all natural calves out of a highly productive daughter of OCC General. "General" was a bull used with great success at Mid Continent Farms in Kansas. All 3 females are different in type because each of the sires are unique in pedigree. But, all 3 females are very solid in their own way. This Ruby Excalibur daughter is Not small! She is extremely stout and very long bodied. **Foundation Cattle Company - Page 13**



Lot 29

# The Juanada Tribe

## 30 **FCC2 Juanada 424B** Spring 2014 - 1/2 Sim. - ASA Pending

SVF Steel Force S701	CNS Dream On L186 SVF Sheza Beauty L901
<b>FBF1 Combustible</b>	
Lazy H Burn Baby Burn R34	WL BS Benchmark Triple C Burn It Up N34L
OCC General 794G	Basin Rainmaker 654X OCC Juanada 709V
<b>FCC Juanada 917T</b>	OCC Great Plains 943G
FCC Juanada 682R	FCC Juanada 3214

3/4 Sim. Bull calf at side by Ruby/SWC Battle Cry 413. DOB 10/18/17.

Once again... see the footnote on lot 7 about the breeding info on these later calving falls. 424B is about as stout and massive bodied as you can make one of these simmental angus females. She is a maternal sister to lots 29 and 31. All 3 of the daughters out of 917T are stout and square. Maybe, it is because the 917T cow traces twice to the cow family that produced OCC Anchor and once to the famed Basin Rainmaker 654X? More support for the theory of... "ITS ABOUT COW FAMILIES MORE THAN EPDS"! This Battle Cry bull calf on her is soggy and big hipped. Here is your herd bull for next year! He comes with mom.. Cow is open and has not been bred on.



Lot 30

E



Lot 66 - 23D  
BWL Movin On x Lot 30

## 31 **FCC2 Juanada 642D** Spring 2016 - 1/2 Sim. - ASA Pending

SVF Steel Force S701	CNS Dream On L186 SVF Sheza Beauty L901
<b>JAG Universal 115B</b>	
AJE/JF Ant Joys Elegance	3C Macho M450 BZ BHS JF Antoinettes Joy
OCC General 794G	Basin Rainmaker 654X OCC Juanada 709V
<b>FCC Juanada 917T</b>	OCC Great Plains 943G
FCC Juanada 682R	FCC Juanada 3214

Due to calve 6/3/18 to by FCC Bonus 490B with a heifer.

Maternal sister to lots 29 and 30. Much of what I had to say in the footnotes for lot 26 above hold true here as well. These 2 bred heifers in the sale out of JAG Universal are about as stout and well made as you can get for sim/angus females. You may be curious how Phil Lautner and I are partners on a bull. Well, it is he and I that fell for an outlier bull that sold at the Iowa Beef Expo a few years back. Universal was DIFFERENT! Moderate, Stout and Extremely thick! Long story.. short... Phil's pockets are deeper than mine! He won the bid! I hit Phil up afterwards. He wanted the bull for a sperm donor at the stud and I wanted the bull as a sperm donor in the pasture. Within 2 minutes a partnership on the bull was formed and we haven't heard from one another since. If you are curious Phil... "bull is still alive"! Call.. him for semen after you buy this standout and take her home and put in your fall herd!. Resulting calf will be a 1/4 Simmental.



Lot 31

E

## 32 **FCC2 Revolution Rose 612D** Spring 2016 - Reg. Angus - AAA Pending

OCC Paxton 730P	OCC Focus 813F OCC Blackbird 736K
<b>OCC Unmistakable 946U</b>	
FCC Revolution Rose 2476	OCC Emblazon 854E OCC Revolution Rose 887H
OCC Practical 841P	OCC Focus 813F OCC Juanada 968G
<b>FCC Revolution Rose 930W</b>	OCC Judge 679J
FCC Revolution Rose 700P	Jauer 7111 Traveler 544 9239

Due to calve 4/15/18 with a heifer by OCC Bard 944B.

She is a 3/4 sister to the lot 33 heifer as well. You talk about consistency.... the 3 bred heifers by OCC Unmistakable selling today came from the same cookie cutter! They are all moderate, big bodied and look like brood cows in the making.. Resulting calf will be a Reg. Angus.



Lot 32

E

# Young Foundation Females

## 33 **FCC2 Revolution Rose 609D** Spring 2016 - Reg. Angus - AAA Pending

OCC Paxton 730P  
**OCC Unmistakable 946U**  
 FCC Revolution Rose 2476

OCC Focus 813F  
 OCC Blackbird 736K

OCC Emblazon 854E  
 OCC Revolution Rose 887H

OCC Priority 882P  
**FCC Revolution Rose 219Z**  
 FCC Revolution Rose 930W

OCC Eureka 865E  
 OCC Dixie Erica 907C

OCC Practical 841P  
 FCC Revolution Rose 700P

Due to calve 6/7/18 with a heifer by FCC Bonus 490B.

As noted before.. She is a 3/4 sister to the lot 32 heifer. OCC Unmistakable is known for producing big bodied, productive cows and has been used with much success at JR Ranch in Washington and McCumber Angus in North Dakota to name a couple places. There are a couple of these later calving heifers that will probably fit more nicely in a fall herd next year. So, they will probably be a little cheaper if time is on your side. To be truthful, I was a little too hard on my replacement group last winter and my replacements were quite green at the beginning of breeding season last summer.. Resulting calf will be a Reg. Angus.



Lot 33

## 34 **FCC2 Juanada 565C** Fall 2015 - 1/2 Sim. - ASA Pending

GKS/SS Movin On X320  
**BWL Moving On 930A**  
 J&C/SS Bernadette

LMF Movin Forward  
 SS Magnificent Dreams

SS Goldmine L42  
 THSF Queens Gal

OCC Priority 882P  
**FCC Juanada 215Z**  
 Akers Juanada 9627

OCC Eureka 865E  
 OCC Dixie Erica 907C

OCC Prestige 672P  
 OCC Juanada 710K

Due to calve 5/27/18 with a heifer by OCC Bard 944B.

Here is another heifer that traces back to the OCC Juanada 710K. This heifer is bred very similar to the lot 9 heifer. She is quite broody in type. Once again, this heifer will probably bring less because she is going to calve a bit later than most breeders prefer. If you don't mind calving on grass in May or if you have a fall herd; then, she may fit in nicely for your operation.. Resulting calf will be a 1/4 Simmental.



Lot 34

## 35 **FCC2 Juanada 644D** Spring 2016 - 3/4 Sim. - ASA Pending

GKS/SS Movin On X320  
**BWL Moving On 930A**  
 J&C/SS Bernadette

LMF Movin Forward  
 SS Magnificent Dreams

SS Goldmine L42  
 THSF Queens Gal

HPF Steel Force Z316  
**FCC2 Juanada 422B**  
 FCC Juanada 109Y

SVF Steel Force S701  
 AJE/JF Ant Joys Elegance

OCC Unbelievable 851U  
 FCC Juanada 926W

Due to calve 10/5/18 to OCC Best Ever 722B.

This is the first of 3 heifers that were bred to be Fall Calvers. Phenotypically, this star headed 3/4 blood simmy heifer is put together very nicely. Her maternal granddam sells as Lot 6 in this sale and she is yet another female being offered that traces back to the OCC Juanada 710K cow. I swear this heifer partially thinks like a human being. She always seems to be in your back pocket when you go to the pasture and she knows what you are about to do! I never got a chance to fetal sex these 3 fall bred. Sorry.. too much going on trying to get ready for this sale!. Resulting calf will be a 3/8 Simmental.



Lot 35

Fall Bred Females...



# Young Foundation Females

## 36 **FCC Revolution Rose 603D** Spring 2016 - Reg. Angus - AAA Pending

OCC Practical 841P  
**OCC Unbelievable 851U**  
OCC Pollyanna 944H

OCC Homer 650H  
**FCC Revolution Rose 49X**  
FCC Revolution Rose 814U

OCC Focus 813F  
OCC Juanada 968G

OCC Anchor 771A  
OCC Pollyanna 979F

OCC Focus 813F  
OCC Dixie Erica 816B

OCC Paxton 730P  
FCC Revolution Rose 687R

Due to calve 9/2/18 to OCC Best Ever 722B.

This is a very easy keeping, moderate framed, Ohlde bred heifer. Her maternal granddam FCC Revolution Rose 814U is one of the most powerful females still residing at FCC. She is pregnant for a Fall 2018 Reg. Angus calf.



Fall Bred Females...

## 37 **FCC Dixie Erica 629D** Spring 2016 - Reg. Angus - AAA Pending

OCC Unbelievable 851U  
**FCC Audi 385A**  
FCC Juanada 508U

FCC X-plorer 458X  
**FCC Dixie Erica 361A**  
FCC Dixie Erica 981W

OCC Practical 841P  
OCC Pollyanna 944H

OCC Premium 701P  
FCC Juanada 855S

OCC Paxton 730P  
FCC Revolution Rose 2476

OCC Practical 841P  
OCC Dixie Erica 963H

Due to calve 9/17/18 to OCC Best Ever 722B.

This feminine angus heifer combines all of the cow families in one package... Dixie Erica, Revolution Rose, Juanada and Pollyanna. Sells bred for a Fall 2018 Reg. Angus calf.



### Special Thank You

I would like to give out a special thank you to long time friends Tim and Trudy Ohlde of Ohlde Cattle Company in Kansas. Tim has kind of been a mentor to me for 20 plus years now and without his input my herd probably wouldn't be where it is at today! He has always left his pasture gates open so to speak and allowed me to analyze and study what appeared to be working best in his operation. There truly is an "ART" to breeding cattle and I have no doubts that Tim Ohlde is one of the "elite artist" of our lifetime! That holds true regardless of what breed of cattle you are dealing with.

### About Foundation Cattle Company

The vast majority of my foundation donors originated from Tim Ohlde's herd in Kansas. Therefore, it should be no surprise that the genetic base in the FCC program is an almost exclusive concentration of 'OCC Bloodlines'. I was first introduced to Tim Ohlde's herd back in 1996. I just happened to be traveling through Kansas during the state's annual Angus tour. Fortunate for me, their place was one of the stops along the route. It only took a few minutes of looking for me to realize that he already had "the type of cow" that I had been trying to produce. Our programs emphasize line breeding to consistently produce attractive, moderate-framed, deep-bodied, easy fleshing females!

I have NO INTEREST in breeding cattle based predominately upon numbers! It seems that has become the standard method of making breeding decisions for many in the cattle industry over the past decade or so. I do take numbers into consideration, but mainly just to avoid extreme negative values. I think most astute cattleman would agree that the GOOD WORKING COWS have a certain look about them! And it is NOT something that you can put An EPD value on! There is definitely more to breeding cattle than just selection based upon numbers. I have tried to concentrate on what will result in a GOOD, FUNCTIONAL FEMALE that still has a nice look and hopefully added sale value. I tried to start with productive cows from proven cow families as donors. Thus, the name 'FOUNDATION CATTLE COMPANY' was born.

Furthermore, I have relied heavily on my embryo transfer program to help propagate the elite donors. The Angus part of the program has a very heavy concentration of 4 very time-tested maternal sires: PBC 707 IM F0203, DHD Traveler 6807, Basin Rainmaker 654X and N Bar Emulation EXT.

# 12 Angus Sons of Revolution Rose Family

**\$50 Discount for all bulls  
picked up sale day!**

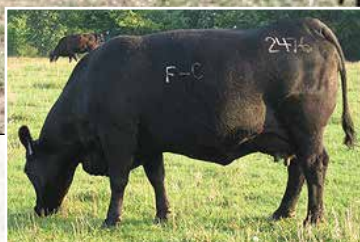


**Lot 38**

*BW 83 - Borderline for heifers*



**OCC Unmistakable 946U**  
Full sibling to 813U



**FCC Revolution Rose 2476**  
Cornerstone Donor



**OCC Revolution Rose 887H**

**38**

**FCC Discovery 10D**

Spring 2016 - Reg. Angus - AAA Pending

**38A &  
38B**

**Embryos by 813U**

2 packages of 3 embryos

OCC Practical 841P  
**OCC Unbelievable 851U**  
OCC Pollyanna 944H

OCC Focus 813F  
OCC Juanada 968G  
  
OCC Anchor 771A  
OCC Pollyanna 979F

OCC Practical 841P  
**OCC Unbelievable 851U**  
OCC Pollyanna 944H

OCC Paxton 730P  
**FCC Revolution Rose 813U**  
FCC Revolution Rose 2476

OCC Paxton 730P  
**FCC Revolution Rose 813U**  
FCC Revolution Rose 2476

OCC Focus 813F  
OCC Blackbird 736K  
  
OCC Emblazon 854E  
OCC Revolution Rose 887H

- "WOW" is the only thing that comes to mind as I try to describe FCC DISCOVERY 10D! It is very difficult to put into words anything that will do this bull justice. I have been fortunate enough to have raised OCC Rear End 751R and OCC Unmistakable 946U from this same cow family. I had no idea when I purchased the full sister to OCC Broadside, with her Rito 9Q4 heifer calf at side, from Ohlde's mature cow reduction sale back in 1998 the kind of impact it would have on my herd twenty years later!
- I can't help but think that FCC Discovery 10D could be one of those breed changing kind of bulls! He is unique in almost every way. This bull has unsurpassed body dimension for his stature! He offers an incredibly, bold sprung, rib cage and tremendous, depth in his flank. At the same time he combines this with incredible muscle shape along with his extremely easy fleshing ability. To top things off he is very upheaded and attractive in his appearance and combines this with a big foot and good scrotal development.
- This bull isn't an accident! He is bred to be this way. His dam is a flush sister to OCC Unmistakable 946U and his sire is OCC Unbelievable 851U. OCC Unbelievable 851U was the \$25,000 half interest, top selling bull back in Ohlde's 2009 Sale.
- If you are into breeding big bodied, easy fleshing females; then, it may be worth your time to take notice of this bull. Retaining 1/2 semen interest, buyer receives 100% possession and 50% semen interest.
- **Lots 38A & 38B** - Offering 2 packages of 3 embryos each that are full siblings to FCC Discovery.

# 12 Angus Sons of Revolution Rose Family



**Lot 39 - BW 63 - Safe for heifers**

You will notice this catalog isn't full of EPD'S and Numbers like most catalogs. These cattle don't vary much in EPD'S since they are genetically so closely bred to one another. The cow families and sire lines in the angus division have virtually the same animals in each and every pedigree as you can see. If you are going to buy with EPD's as your deciding factor; then, you have thousands of places to go to buy your herd bull or next donor and I wish you luck with that. We aren't mating cattle at a computer late at night based on the latest EPD release just to find out later that many of the numbers changed drastically on particular animals. Rather, we are making breeding choices while walking through a pasture and looking at a cows strengths and weakness and deciding what it may take to improve her more so "IN FUNCTION" than on paper. The gene pool has been limited to proven bloodlines that have worked for decades and that is the reason for such uniformity in how these cattle reproduce. These cattle are moderate, easy keeping, maternal oriented and have long been bred for calving ease.



**FCC Revolution Rose 812U**  
Dam of Lot 39



**Lot 40 - BW 68 - Safe for heifers**

**39**

December 2015 - Reg. Angus - AAA Pending

**FCC Captain 96C**

OCC Paxton 730P

**FCC Yukon 145Y**

FCC Revolution Rose 859S

OCC General 794G

**FCC Revolution Rose 812U**

FCC Revolution Rose 2476

OCC Focus 813F  
OCC Blackbird 736K

OCC Nectar 702N  
FCC Revolution Rose 987N

Basin Rainmaker 654X  
OCC Juanada 709V

OCC Emblazon 854E  
OCC Revolution Rose 887H

- FCC Captain 96C is another standout bull. His dam is the featured Lot 1 female in this sale. To be quite truthful, the only reason that she is being offered at this time is because I feel that this bull is a very good, herd sire candidate for a progressive operation and he shows what potential FCC Revolution Rose 812U has as a breeding piece! Plus the fact that she is 10 years of age and I have some embryos in the tank out of her.
- Captain's dam is an OCC General 794G daughter out of the mother of OCC Unmistakable 946U. OCC General 794G is a direct son of the famous and scarce BASIN RAINMAKER 654X and General's dam is more widely known as being the mother of OCC Anchor 771A.
- To further make FCC Captain's pedigree unique, he is sired by FCC Yukon 145Y which means he traces to Revolution Rose Cow family on both the top and bottom side of his pedigree.
- Captain is built like a truck. He also is incredibly deep chested and deep flanked. Combined along with an attractive phenotype, good length of body and a smooth muscle pattern throughout.
- Don't overlook him. He is another Herd Caliber bull. Retaining 1/2 semen interest, buyer receives 100% possession and 50% semen interest.

**40**

December 2015 - Reg. Angus - AAA Pending

**FCC Cavalier 95C**

OCC Paxton 730P

**FCC Yukon 145Y**

FCC Revolution Rose 859S

OCC Priority 882P

**FCC Revolution Rose 172Y**

FCC Revolution Rose 813U

OCC Focus 813F  
OCC Blackbird 736K

OCC Nectar 702N  
FCC Revolution Rose 987N

OCC Eureka 865E  
OCC Dixie Erica 907C

OCC Paxton 730P  
FCC Revolution Rose 2476

- This bull's granddam is also the mother of the Lot 38 bull, FCC Discovery.
- His dam, 172Y, is currently one of the top producing young females in the FCC program
- This is an attractive, moderate framed, square hipped, level made bull with depth and a clean made front end
- Cavalier will be a definite calving ease sire that will produce the ideal replacement females. Buy with confidence... His daughters will be Nice!

# 12 Angus Sons of Revolution Rose Family

## 41 FCC Dark Horse 12D

Spring 2016 - Reg. Angus - AAA Pending

OCC Practical 841P

OCC Focus 813F  
OCC Juanada 968G

**OCC Unbelievable 851U**

OCC Pollyanna 944H

OCC Anchor 771A  
OCC Pollyanna 979F

OCC Priority 882P

OCC Eureka 865E  
OCC Dixie Erica 907C

**FCC Revolution Rose 170Y**

FCC Revolution Rose 812U

OCC General 794G  
FCC Revolution Rose 2476

- This bull's granddam is the featured lot 1 donor
- Dark Horse has a tick more frame than most of the Angus bulls in this offering.
- Long bodied with an extended clean neck and smooth shoulders best describes him.
- He will be a calving ease bull that will sire some very attractive daughters.



*Lot 41 - BW 70 - Safe for heifers*

## 42 FCC Designer 3D

Spring 2016 - Reg. Angus - AAA Pending

OCC Eureka 865E

OCC Backstop 888B  
Blackbird of RR 1204

**OCC Priority 882P**

OCC Dixie Erica 907C

N Bar Emulation EXT  
Dixie Erica of CH 1019

OCC Unbelievable 851U

OCC Practical 841P  
OCC Pollyanna 944H

**FCC Revolution Rose 48X**

FCC Revolution Rose 812U

OCC General 794G  
FCC Revolution Rose 2476

- This bull's granddam is the featured lot 1 donor.
- His dam, FCC Revolution Rose 48X, seldom goes unnoticed by visitors on pasture tours. She is a beautiful, moderate framed, big bodied OCC Unbelievable daughter that epitomizes the type of female I strive to produce at FCC! (Full sibling embryos to her sell as Lot 1B).
- Designer is a moderate framed, strong topped, calving ease bull with plenty of depth and thickness.



*Lot 42 - BW 68 - Safe for heifers*

## 43 FCC Dignitary 9D

Spring 2016 - Reg. Angus - AAA Pending

OCC Paxton 730P

OCC Focus 813F  
OCC Blackbird 736K

**FCC Yukon 145Y**

FCC Revolution Rose 859S

OCC Nectar 702N  
FCC Revolution Rose 987N

OCC Unbelievable 851U

OCC Practical 841P  
OCC Pollyanna 944H

**FCC Revolution Rose 355A**

FCC Revolution Rose 811U

OCC General 794G  
FCC Revolution Rose 2476

- This bull's granddam is a flush sister to the lot 1 donor in this sale and has been a great producer and served as a donor at FCC.
- Dignitary may be one of the growthiest Angus bulls in the offering.
- He is very deep flanked, big ribbed and has ample bone and power.
- He should add fleshing ability to a group of cows and not sacrifice performance.



*Lot 43 - BW 79 - Borderline for heifers*

# 12 Angus Sons of Revolution Rose Family

## 44 FCC Delegate 94D

Fall 2016 - Reg. Angus - AAA Pending

OCC Paxton 730P  
**FCC Yukon 145Y**  
 FCC Revolution Rose 859S

OCC Focus 813F  
 OCC Blackbird 736K

OCC Nectar 702N  
 FCC Revolution Rose 987N

OCC Homer 650H  
**FCC Revolution Rose 175Y**  
 FCC Revolution Rose 995N

OCC Focus 813F  
 OCC Dixie Erica 816B

OCC Joker 620J  
 OCC Revolution Rose 887H

- This bull's dam is the only flush sister born to date to OCC Rear End 751R.
- OCC Rear End has been used heavily in South America and by Ohlde followers in the United States with great success!
- The 175Y cow has been a consistent producer.
- Delegate is a well balanced bull that should prove to offer calving ease and leave very efficient daughters.

## 45 FCC Dazzler 1D

Spring 2016 - Reg. Angus - AAA Pending

OCC Practical 841P  
**OCC Unbelievable 851U**  
 OCC Pollyanna 944H

OCC Focus 813F  
 OCC Juanada 968G

OCC Anchor 771A  
 OCC Pollyanna 979F

OCC Nectar 702N  
**FCC Revolution Rose 116Y**  
 FCC Revolution Rose 516U

OCC Judge 679J  
 OCC Dixie Erica 606G

OCC Paxton 730P  
 FCC Revolution Rose 689R

- Dazzler got this name for a reason..... he is the flashiest bull in the sale.
- He comes by this naturally.... Both his sire and dam excel in phenotype as well... being very attractive and smooth through their front one-thirds.
- His clean made, extended neck comes up high out of his shoulder... just as his sire and dam.
- This is an attractive made bull that should offer calving ease in a very well balanced, complete and soft made package.
- Dazzler is nearly ideal with his softness, combined with "THE LOOK" and perfect muscle shape and rump structure.
- You clubby breeders looking for a maternal, calving ease, OCC bred Angus bull need to pay attention here!
- FCC retains 1/3 Semen Interest & No Possession.

## 46 FCC Daybreak 2D

Spring 2016 - Reg. Angus - AAA Pending

OCC Eureka 865E  
**OCC Priority 882P**  
 OCC Dixie Erica 907C

OCC Backstop 888B  
 Blackbird of RR 1204

N Bar Emulation EXT  
 Dixie Erica of CH 1019

OCC Unbelievable 851U  
**FCC Revolution Rose 280Z**  
 FCC Revolution Rose 980W

OCC Practical 841P  
 OCC Pollyanna 944H

OCC Paxton 730P  
 FCC Revolution Rose 2476

- Daybreak should allow you to sleep all night with confidence.
- He is a moderate framed, smooth shouldered and smooth bodied bull that should offer extreme calving ease and still be capable of leaving you a set of attractive replacement heifers.
- Maternal granddam, FCC Revolution Rose 980W, is a full sister to OCC Unmistakable 946U.



**OCC Rear End 751R**  
 Full sibling to dam of Lot 44



**Lot 45 - BW 65 - Safe for heifers**



**Lot 46 - BW 71 - Safe for heifers**

# 12 Angus Sons of Revolution Rose Family

## 47

### FCC Dominator 14D

Spring 2016 - Reg. Angus - AAA Pending

OCC Practical 841P  
**OCC Unbelievable 851U**  
 OCC Pollyanna 944H

OCC Focus 813F  
 OCC Juanada 968G

OCC Anchor 771A  
 OCC Pollyanna 979F

OCC Nectar 702N

OCC Judge 679J  
 OCC Dixie Erica 606G

**FCC Revolution Rose 859S**

FCC Revolution Rose 987N

OCC Honesty 962H  
 OCC Revolution Rose 919E

- Dominator's pedigree represents a large percentage of the younger angus females currently residing at FCC.
- Dominator is a maternal brother to FCC Yukon 145Y (an OCC Paxton 730P son used heavily as a herd bull on heifers at FCC over the past 4 years). I have numerous young angus females residing in the herd that are FCC Yukon's out of OCC Unbelievable dams.
- Opportunity could be knocking for someone here. He is an OCC Unbelievable son out of FCC Yukon's dam. Both his dam and sire offer calving ease and are phenotypically ideal in type.
- Buy with confidence. This is a solid, well balanced, calving ease bull that was bred to be just as he is.



*Lot 47 - BW 75 - Safe for heifers*

## 48

### FCC Dateline 4D

Spring 2016 - Reg. Angus - AAA Pending

OCC Eureka 865E  
**OCC Priority 882P**  
 OCC Dixie Erica 907C

OCC Backstop 888B  
 Blackbird of RR 1204

N Bar Emulation EXT  
 Dixie Erica of CH 1019

OCC Unbelievable 851U

OCC Practical 841P  
 OCC Pollyanna 944H

**FCC Revolution Rose 276Z**

FCC Revolution Rose 976W

OCC Paxton 730P  
 FCC Revolution Rose 859S

- Another proven and time tested pedigree.
- Dateline's sire is OCC Priority..... a long time herd bull at FCC and his dam is a flush sister to FCC Yukon.... Another FCC Herdsire.
- This guy is extremely long bodied with an extended front end, flat topline and has plenty of natural thickness.



*Lot 48 - BW 80 - Borderline for heifers*

## 49

### FCC Deluxe 5D

Spring 2016 - Reg. Angus - AAA Pending

OCC Eureka 865E  
**OCC Priority 882P**  
 OCC Dixie Erica 907C

OCC Backstop 888B  
 Blackbird of RR 1204

N Bar Emulation EXT  
 Dixie Erica of CH 1019

OCC Unbelievable 851U

OCC Practical 841P  
 OCC Pollyanna 944H

**FCC Revolution Rose 16X**

FCC Revolution Rose 518U

OCC Premium 701P  
 FCC Revolution Rose 987N

- Deluxe is a growthier bull that exhibits a little more bone and ruggedness.
- He offers plenty of depth and length and is backed by a top notched OCC Unbelievable daughter! No holes here.



*Lot 49 - BW 78 - Should be OK on heifers*

# 7 Angus Sons Descending from OCC Juanada 710K



**FCC Juanada 928W**  
**Dam of Lots 50 & 51**

**Lot 50 - BW 75 - Should be OK on heifers**



**FCC Juanada 854S**  
**Maternal Granddam**  
**of Lots 50 - 52**

**FCC Dividend 97D**

**50**

Nov. 2016 - Reg. Angus - AAA Pending

OCC Practical 841P	OCC Focus 813F
<b>FCC Warden 578W</b>	OCC Juanada 968G
FCC Dixie Erica 934T	OCC Emblazon 854E
OCC Neville 659N	OCC Dixie Erica 963H
<b>FCC Juanada 928W</b>	OCC Headliner 661H
FCC Juanada 854S	OCC Dixie Erica 803F
	OCC Emblazon 854E
	OCC Juanada 710K

- CHANGER BULL! CHANGER BULL!
- FCC Dividend 97D is an absolute tank! He is THICK, POWERFUL, BIG RIBBED, BIG TOPPED and offers tremendous MUSCLE and CAPACITY in a moderate package! He is a bull that would make a huge splash in a grass finishing regime!
- It isn't by accident that he is built like this. Both of his granddams are featured and sell in this sale. His maternal granddam is the lot 4, FCC Juanada 854S donor, that is a direct daughter of OCC Emblazon and the infamous OCC Juanada 710K donor. Meanwhile, his paternal granddam is the lot 2, FCC Dixie Erica 934T donor, that is also an OCC Emblazon daughter that is further backed by OCC Anchor, EXT and the famous Dixie Erica 1019 cow!
- This guy stacks all of the proven OCC greats and could just be the next OCC Anchor, OCC Headliner or OCC Rear End!! If you can market this type; then, opportunity is knocking!
- Furthermore his dam is another standout on farm tours (moderate, attractive, thick and very efficient with a nice udder!) FCC Dividend 97D will produce those moderate, powerful, easy fleshing females that are found throughout his family tree!
- Retaining 1/2 semen interest, buyer receives 100% possession and 50% semen interest.



**Lot 51 - BW 76 - Borderline for heifers**

**FCC Counselor 92C**

**51**

Dec. 2015 - Reg. Angus - AAA Pending

OCC Eureka 865E	OCC Backstop 888B
<b>OCC Priority 882P</b>	Blackbird of RR 1204
OCC Dixie Erica 907C	N Bar Emulation EXT
	Dixie Erica of CH 1019
OCC Neville 659N	OCC Headliner 661H
<b>FCC Juanada 928W</b>	OCC Dixie Erica 803F
FCC Juanada 854S	OCC Emblazon 854E
	OCC Juanada 710K

- Counselor is a maternal brother to the Lot 50 bull.
- He is rowthy and rugged.... Yet, attractive in type
- Offers lots of muscle and thickness and is DEEP throughout.
- Maternal granddam, FCC Juanada 854S, sells as Lot 4.

**Visit Online for Video Previews, Updates,**  
**as well as additional**

**Donor Reference Pictures:**

**[www.foundationcattlecompany.com](http://www.foundationcattlecompany.com)**

**On Facebook under**

**Foundation Cattle Company**

# 7 Angus Sons Descending from OCC Juanada 710K

## 52

### FCC Dealer 24D

Spring 2016 - Reg. Angus - AAA Pending

OCC Eureka 865E

OCC Backstop 888B  
Blackbird of RR 1204

**OCC Priority 882P**

OCC Dixie Erica 907C

N Bar Emulation EXT  
Dixie Erica of CH 1019

Papa Forte 1921

Papa Optima 9818  
Papa Envious Blackbird 8832

**FCC Juanada 183Y**

FCC Juanada 854S

OCC Emblazon 854E  
OCC Juanada 710K

- Another solid OCC Priority son here that is attractive with good natural thickness.
- a slightly different pedigree here with Papa Forte thrown in on top of The Lot 4 donor
- Maternal granddam, FCC Juanada 854S, sells as Lot 4.



*Lot 52 - BW 75 - Should be OK on heifers*

## 53

### FCC Diplomat 7D

Spring 2016 - Reg. Angus - AAA Pending

OCC Paxton 730P

OCC Focus 813F  
OCC Blackbird 736K

**FCC Yukon 145Y**

FCC Revolution Rose 859S

OCC Nectar 702N  
FCC Revolution Rose 987N

OCC Emblazon 854E

DHD Traveler 6807  
Dixie Erica of CH 1019

**FCC Juanada 855S**

OCC Juanada 710K

OCC Anchor 771A  
OCC Juanada 709Z

- Diplomat is a direct son out of FCC Yukon and the Lot 3 Donor, FCC Juanada 855S!
- He should be a definite calving ease bull that has an ideal muscle pattern and is very attractive.
- This guy should sire some pretty replacement heifers.
- FCC retains 1/3 Semen Interest & No Possession.



*Lot 53 - BW 65 - Safe for heifers*

## 54

### FCC Champ 93C

Dec. 2015 - Reg. Angus - AAA Pending

OCC Eureka 865E

OCC Backstop 888B  
Blackbird of RR 1204

**OCC Priority 882P**

OCC Dixie Erica 907C

N Bar Emulation EXT  
Dixie Erica of CH 1019

OCC Premium 701P

OCC Emblazon 854E  
OCC Dixie Erica 803F

**FCC Juanada 508U**

FCC Juanada 855S

OCC Emblazon 854E  
OCC Juanada 710K

- Lot 54 & 55 are twins and they look like it too.
- If you have a larger pasture to turn out to and want to keep the uniformity in the calves out of your heifers; then, here is your chance to turn out 2 brothers.
- Champ does a lot of things right. He offers calving ease in a moderate framed, easy fleshing, deep ribbed package.
- Maternal granddam, FCC Juanada 855S, sells as Lot 3.



*FCC Juanada 855S  
She sells as Lot 3!*



*Lot 54 - BW 62 (twin) - Safe for heifers*



# 7 Angus Sons Descending from OCC Juanada 710K

## 55

### FCC Charger 94C

Dec. 2015 - Reg. Angus - AAA Pending

OCC Eureka 865E

OCC Backstop 888B  
Blackbird of RR 1204

**OCC Priority 882P**

OCC Dixie Erica 907C

N Bar Emulation EXT  
Dixie Erica of CH 1019

OCC Premium 701P

OCC Emblazon 854E  
OCC Dixie Erica 803F

**FCC Juanada 508U**

FCC Juanada 855S

OCC Emblazon 854E  
OCC Juanada 710K

- Lot 55 is the twin to Lot 54.
- Charger is very similar to his brother. A solid calving ease prospect in a moderate, sound package that is backed by the Lot 3 donor, FCC Juanada 855S.
- It often scares me to turn out just 1 bull with a group of heifers. Here is your chance to have some peace of mind and still keep your uniformity in the next calf crop.



*Lot 55 - BW 60 (twin) - Safe for heifers*

## 56

### FCC Distinction 6D

Spring 2016 - Reg. Angus - AAA Pending

N Bar Emulation EXT

Emulation N Bar 5522  
N Bar Primrose 2424

**OCC Great Plains 943G**

Dixie Erica of CH 1019

PBC 707 1M FO203  
Dixie Erica of CH 615

OCC Unbelievable 851U

OCC Practical 841P  
OCC Pollyanna 944H

**FCC Juanada 366A**

FCC Juanada 926W

OCC Paxton 730P  
FCC Juanada 855S

- If this isn't an almost ideal heifer bull; then, I should probably get out of the cattle business.
- You start with the Lot 3, FCC Juanada 855S donor, and then you stack OCC Paxton, OCC Unbelievable and OCC Great Plains on top of that! That should almost assure calving ease and Elegant replacement heifers!
- To top it off Distinction looks the part.....attractive, smooth patterned and complete!
- FCC retains 1/3 Semen Interest & No Possession.



*Lot 56 - BW 76 - Safe for heifers*

## 57

### FCC Defender 92D

Fall 2016 - Reg. Angus - AAA Pending

OCC Practical 841P

OCC Focus 813F  
OCC Juanada 968G

**FCC Warden 578W**

FCC Dixie Erica 934T

OCC Emblazon 854E  
OCC Dixie Erica 963H

OCC Stately 671S

OCC No Fault 901N  
OCC Dixie Erica 776M

**FCC Pollyanna 290Z**

OCC Pollyanna 859U

OCC Great Plains 943G  
OCC Pollyanna 944H

- Defender is the only bull in the offering that descends from the Pollyanna cow family which is what produced OCC Unbelievable.
- He also combines the Lot 2 donor, FCC Dixie Erica 934T, into the pedigree through her son.... FCC Warden.
- This will prove to be a very solid calving ease bull and only needs more time to mature. He offers length and thickness in a very complete package.
- This bull doesn't have any holes.



*Lot 57 - BW 70 - Safe for heifers*

# 3 Angus Sons from Dixie Erica Family

*BW 65 - Should be OK on heifers*

## 58

### FCC Density 11D

Spring 2016 - Reg. Angus - AAA Pending

OCC Paxton 730P

OCC Focus 813F  
OCC Blackbird 736K

**OCC Unmistakable 946U**

FCC Revolution Rose 2476  
OCC Emblazon 854E  
OCC Revolution Rose 887H

OCC Priority 882P

OCC Eureka 865E  
OCC Dixie Erica 907C

**FCC Dixie Erica 911W**

OCC Dixie Erica 963H  
OCC Anchor 771A  
OCC Dixie Erica 907C

- This is definitely one of the better angus bulls in the sale.
- He is the only son of OCC Unmistakable in the offering.
- "Ohlde type" may best describe him! Moderate, Deep, Easy Keeping, Long Bodied and Attractive with ideal Muscle and Rib Shape are all adjectives that are fitting for him!
- Density may not be a full proof calving ease bull; but, he will without a doubt be a Full Proof HEIFER MAKER!!
- FCC retains 1/3 Semen Interest & No Possession.

### FCC Dakota 91D

## 59

Fall 2016 - Reg. Angus - AAA Pending

OCC Paxton 730P

OCC Focus 813F  
OCC Blackbird 736K

**FCC Yukon 145Y**

FCC Revolution Rose 859S  
OCC Nectar 702N  
FCC Revolution Rose 987N

OCC Eureka 865E

OCC Backstop 888B  
Blackbird of RR 1204

**FCC Dixie Erica 44X**

FCC Dixie Erica 970T  
OCC Focus 813F  
OCC Dixie Erica 963H

- FCC Yukon has always been a trustworthy heifer bull and his sons are doing the same.
- Dakota is built a lot like FCC Yukon... Attractive, Deep, Good Rib Shape and smooth shouldered.
- Another solid calving ease prospect here without sacrificing performance.

### FCC Deputy 8D

## 60

Spring 2016 - Reg. Angus - AAA Pending

OCC Paxton 730P

OCC Focus 813F  
OCC Blackbird 736K

**FCC Yukon 145Y**

FCC Revolution Rose 859S  
OCC Nectar 702N  
FCC Revolution Rose 987N

OCC Unbelievable 851U

OCC Practical 841P  
OCC Pollyanna 944H

**FCC Dixie Erica 407B**

FCC Dixie Erica 163Y  
FCC Tailor Made 874T  
CRCC Dixie Erica 6078

- This may be the second most flashy Angus bull of the group.
- Deputy is another great calving ease prospect out of FCC Yukon.
- He is very upheaded with a long, clean front end and balanced throughout.
- He is smooth made, athletic and offers ample rib.
- He is bred to be this way and will sire some beautiful feminine daughters, just look at his granddam that sells as lot 11.



*Lot 58*



*OCC Dixie Erica 963H  
Maternal Granddam  
of Lot 58.*



*Lot 59 - BW 69 - Safe for heifers*



*Lot 60 - BW 67 - Safe for heifers*



*FCC Dixie Erica 163Y  
She sells as Lot 11!*

# Simmental Bulls

## 61

### FCC2 Deacon 18D

Spring 2016 - 1/2 Sim. - ASA Pending

SVF Steel Force S701

CNS Dream On L186  
SVF Sheza Beauty L901

**HPF Steel Force Z316**

AJE/JF Ant Joys Elegance

3C Macho M450 BZ  
BHS JF Antoinettes Joy

OCC Priority 882P

OCC Eureka 865E  
OCC Dixie Erica 907C

**FCC Rosetta 972T**

Jauer 7318 DBL 3121 039

Ideal 7318 DBL Image 5002 15  
Jauer Stretch 039 57

- Deacon is the first bull in the Sim/Angus division of the offering.
- He is a solid black, half blood simmental that offers a bit more frame and power.
- Big topped, tremendous muscle shape, growthy with a long, clean front end best describe him. He is attractive with lots of rib.
- He is backed by the proven and time tested Jauer 3121 cow in his lineage.



*Lot 61 - BW 80 - Mature cow use*



*Jauer 7318 DBL 3121 039  
Foundation Donor for  
Lots 61 & 62.*

## 62

### FCC2 Commander 90C

Dec. 2015 - 1/2 Sim. - ASA Pending

GKS/SS Movin On X320

LMF Movin Forward  
SS Magnificent Dreams

**BWL Moving On 930A**

J&C/SS Bernadette

SS Goldmine L42  
THSF Queens Gal

FCC Warrant 580W

OCC Practical 841P  
OCC Dixie Erica 963H

**FCC Rosetta 162Y**

FCC Rosetta 972T

OCC Priority 882P  
Jauer 7318 DBL 3121 039

- Commander is another solid black, half blood simmental bull that should sire some incredible replacement females and feeder steers!
- He is long bodied, balanced and has great muscle shape.
- The females in his pedigree are solid producers.



*Lot 62 - BW 65 - Borderline for heifers*

## 63

### FCC2 Catalyst 91C

Dec. 2015 - 1/2 Sim. - ASA Pending

GKS/SS Movin On X320

LMF Movin Forward  
SS Magnificent Dreams

**BWL Moving On 930A**

J&C/SS Bernadette

SS Goldmine L42  
THSF Queens Gal

OCC Priority 882P

OCC Eureka 865E  
OCC Dixie Erica 907C

**FCC Dixie Erica 912W**

OCC Dixie Erica 963H

OCC Anchor 771A  
OCC Dixie Erica 907C

- Catalyst is yet another solid black, half blood simmental bull that offers good length, depth and muscle shape.
- There are only 4 of these half blood sons being offered in this sale out of the BWL Moving On simmental sire. If you get nothing else out of reading these footnotes.... Pay close attention to how nice and uniform this sire group has been throughout the bull and female division of this sale! Go back and study the daughters.... I can honestly say there isn't a marginal daughter or son in this sale out of him! They are all SUPER SOUND, ATTRACTIVE and IDEAL IN TYPE! It would make me think that these sons will breed true as well!



*Lot 63 - BW 74 - Mature cow use*

# Simmental Bulls

## 64

### FCC2 Dynasty 22D

Spring 2016 - 1/2 Sim. - ASA Pending

**GKS/SS Movin On X320**  
**BWL Moving On 930A**  
 J&C/SS Bernadette

LMF Movin Forward  
 SS Magnificent Dreams

SS Goldmine L42  
 THSF Queens Gal

OCC Unbelievable 851U  
**FCC Juanada 284Z**

OCC Practical 841P  
 OCC Pollyanna 944H

FCC Juanada 928W

OCC Neville 659N  
 FCC Juanada 854S

- Dynasty descends from the lot 4 donor, FCC Juanada 854S. Also notice that his granddam is the female that produced the lot 50 bull in this sale as well.
- He is a black, half blood simmental with a little white on his forehead.
- This is another son of the BWL Moving On simmental bull that is growthy, rugged and has depth.
- He will sire some incredible replacement females.



*Lot 64 - BW 84 - Mature cow use*



*FCC Juanada 928W  
 Maternal Granddam  
 of Lot 64!*

## 65

### FCC2 Destiny 17D

Spring 2016 - 3/4 Sim. - ASA Pending

**SVF Steel Force S701**  
**HPF Steel Force Z316**  
 AJE/JF Ant Joys Elegance

CNS Dream On L186  
 SVF Sheza Beauty L901

3C Macho M450 BZ  
 BHS JF Antoinettes Joy

Ruby NFF Excalibur 002X

LBS The Foreman 702T  
 Ruby Rhythm 418P

**FCC2 Juanada 318A**

Akers Juanada 9627

OCC Prestige 672P  
 OCC Juanada 710K

- Destiny traces back to the famous OCC Juanada 710K donor.
- Solid black, 3/4 blood, simmental bull that is pretty, smooth and has tremendous length of body and a clean front end. His sire consistently passed this on to his progeny.
- Would work extremely well on a group of cows with a heavy Angus base.



*Lot 65 - BW 78 - Mature cow use*

## 66

### FCC2 Dependable 23D

Spring 2016 - 3/4 Sim. - ASA Pending

**GKS/SS Movin On X320**  
**BWL Moving On 930A**  
 J&C/SS Bernadette

LMF Movin Forward  
 SS Magnificent Dreams

SS Goldmine L42  
 THSF Queens Gal

FBF1 Combustible

SVF Steel Force S701  
 Lazy H Burn Baby Burn R34

**FCC2 Juanada 424B**

FCC Juanada 917T

OCC General 794G  
 FCC Juanada 682R

- Dependable's dam sells as lot 30 in this sale along with an excellent brother to this bull at her side.
- Go back and look at his lot 30 dam..... she is deep and very easy fleshing for a sim/angus female. This bull should produce daughters that will develop into cows like her!
- To make things even more convincing. He is sired by the BWL Moving On bull.
- This is a 3/4 blood, black baldy, simmental bull that is long, sound, smooth made, balanced and great hipped.



*Lot 66 - BW 65 - Borderline for heifers.*



*FCC2 Juanada 424B  
 She sells as Lot 30*

# Simmental Bulls

## 67

### FCC2 Desperado 13D

Spring 2016 - 1/2 Sim. - ASA Pending

SVF Steel Force S701  
**HPF Steel Force Z316**  
 AJE/JF Ant Joys Elegance

CNS Dream On L186  
 SVF Sheza Beauty L901

3C Macho M450 BZ  
 BHS JF Antoinettes Joy

OCC Paxton 730P  
**FCC Revolution Rose 976W**  
 FCC Revolution Rose 859S

OCC Focus 813F  
 OCC Blackbird 736K

OCC Nectar 702N  
 FCC Revolution Rose 987N

- Desperado is a half blood bull out of a full sister to FCC Yukon.
- He is super attractive, choke necked and long bodied.



*Lot 67 - BW 68 - Borderline for heifers.*

## 68

### FCC2 Dynamite 16D

Spring 2016 - 5/8 Sim. - ASA Pending

Remington Lock n Load 54U  
**W/C Lock n Load 1143Y**  
 Aubreys Black Blaze III

Remington On Target 2S  
 Bar 15 Miss Knight 78E-51G

3C Macho M450 BZ  
 Blaze IV 1P

OCC Kiddo 832K  
**FCC 75X**  
 Derrer Farms Miss Bear 10K

OCC Emblazon 854E  
 OCC Juanada 957F

Black Bear (PB. Sim.)  
 Angus

- Dynamite's dam is the lot 22 female in this sale and he also has a maternal sister that sells as lot 23.
- Take note that this cow family really puts an attractive look into their offspring and this bull should breed the same way. Pay particular attention to his super stout, little brother that sells along side the lot 22 female.
- To further support this bull's breeding potential is the fact that he is backed by the Sandeen herd sire 1143. 1143 is a full brother to the widely used W/C Loaded Up.
- If you have a bunch of black cows at home and like baldy calves; then, you may be wise to strongly consider taking this attractive, long bodied, good hipped, baldy bull home to turn out with them!



*Lot 68 - BW 75 - Borderline for heifers.*



**FCC 75X**  
*She sells as Lot 22*

## 69

### FCC2 Doctor 90D

May 2016 - 3/4 Sim. - ASA Pending

Yardley High Regard W242  
**W/C No Remorse 763Y**  
 DW Susanna 763T

Yardley Impressive T371  
 Miss Yardley T68

Bushs Focus 603  
 LaGrand Susanna 5501

FBFS Wheel Man 649W  
**FBF1 Liberty B600**  
 THSF Ms Liberty S600

SVF Steel Force S701  
 SVF Star Struck S199

THSF Mr Precise 456P  
 THSF Prestige

- If you like sim/angus bulls that are stylish, long bodied and thick muscled; then, FCC Doctor may be the bull for you.
- He is a really powerful 3/4 blood simmental bull that is backed by a Simmental cow family that has great success for the Foster Bros family in Texas. The S600 granddam of this bull has had a very proven record as a donor in their program.



*Lot 69 - BW 76 - Borderline for heifers.*

## Reference Sires

### **A** *Ruby SWC Battle Cry 431B*

PB Simmental - ASA 2871257

SVF Steel Force S701  
**Mr HOC Broker**  
JM BF H25

CNS Dream On L186  
SVF Sheza Beauty L901

G&L Blackfoot 716D  
YC Miss Blk B8o

Mr NLC Upgrade U8676  
**SWC Ruby Yettie 143Y**  
JM Miss Olivia L36

Ellingson Legacy M229  
Ms NLC Mojo S6119B

GW Lucky Dice 187Y  
JM BF H25

Sired by Broker, a past Triple Crown Champion, and backed by H25 on the bottom side! Possibly the heaviest used and most proven low birth weight son of Broker! EPD's BW -0.2, WW 78, YW 111, Milk 13.6.



### **B** *W/C Lock n Load 1143Y*

PB Simmental - ASA 2871257

Remington On Target 2S  
**Remington Lock n Load 54U**  
Bar 15 Miss Knight 78E-51G

Remington Red Label HR  
Drake Soft Touch 15M

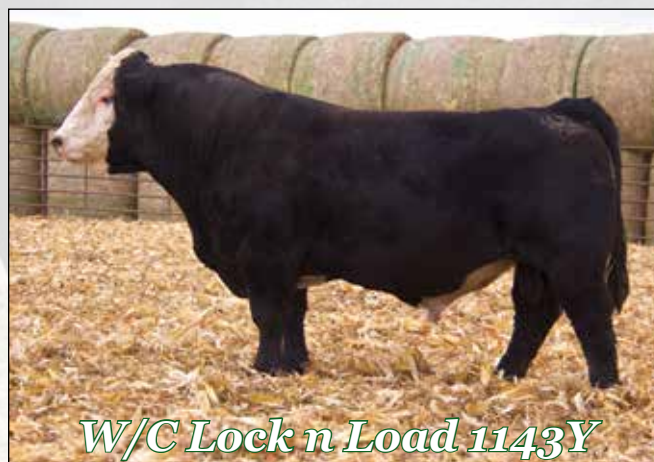
SV Charlies Applause  
Bar 15 Miss Kinght 83Y-78E

3C Macho M450 BZ  
**Aubrey's Black Blaze III**  
Blaze IV 1P

Meyer Ranch 734  
3C Crocus H112 B

PVF-BF BF26 Black Joker  
LK Freckles 04K

Sandeen's full brother to the infamous "Loaded Up", sire of multiple high sellers in their fall bred heifer sale! EPD's BW -1.4, WW 49, YW 76, Milk 20.6.



### **C** *OCC Best Ever 722B*

Reg. Angus - AAA 18413416

OCC Great Plains 943G  
**OCC Work of Art 766W**  
OCC Dixie Erica 662J

N Bar Emulation EXT  
Dixie Erica of CH 1019

OCC Emblazon 854E  
OCC Dixie Erica 816B

OCC Eureka 865E  
**OCC Dixie Erica 606T**  
OCC Dixie Erica 816B

OCC Backstop 888B  
Blackbird of RR 1204

DHD Traveler 6807  
Dixie Erica of CH 1019

The second high selling bull at the 2016 OCC sale commanding \$15,000. He is a double bred 816B. 816B is a full sister to Emblazon and the dam of Homer. EPD's BW -0.2, WW 34, YW 58, Milk 17.



Sale Terms Continued...

### **D** *FCC Bonus 490B*

Reg. Angus

OCC Practical 841P  
**OCC Unbelievable 851U**  
OCC Pollyanna 944H

OCC Focus 813F  
OCC Juanada 968G

OCC Anchor 771A  
OCC Pollyanna 979F

OCC Paxton 730P  
**FCC Revolution Rose 980W**  
FCC Revolution Rose 2476

OCC Focus 813F  
OCC Blackbird 736K

OCC Emblazon 854E  
OCC Revolution Rose 887H

Bonus's sire, OCC Unbelievable, was the high selling bull in Ohlde's 2009 sale commanding \$25,000. Dam is a full sister to OCC Unmistakable who is one of the top yearling weight EPD bulls to ever come out of the OCC program. Bonus is a full brother in blood to Lot 38, FCC Discovery 10D.

#### Herd Health:

All cattle sold will carry health papers for interstate travel to anywhere in the continental United States. Bulls will be semen checked as sound prior to sale day, and all 18 month old bulls will be trich tested as free prior to sale.

#### Registrations:

All cattle sold as registered will be transferred to their new owners. Please let the sale clerks know how you would like your purchases transferred at the time of settlement.

#### Embryos:

All embryos sold will carry a one pregnancy guarantee per package sold as long as work is done by a certified AETA embryologist. All shipping costs are the responsibility of the buyer.

## Reference Sires

# E

### STF Beau 405C

PB Simmental - ASA 2988027

SVF Steel Force S701  
**Mr HOC Broker**  
JM BF H25

CNS Dream On L186  
SVF Sheza Beauty L901

G&L Blackfoot 716D  
YC Miss Blk B80

STF Dominance T171

STF Dominique R170  
MMP Kiss This 37L

**STF Onyx 451W**

GCF Miss Caliente

SAC Mr Mt 73G  
SS Me Too L06

Sired by Broker, a past Triple Crown Champion, and backed by Onyx a Two Time NAILE Champion Simmental Female! EPD's BW 3.3, WW 53, YW 77, Milk 16.8.



*STF Beau 405C*

# F

### JAG Universal 115B

PB Simmental - ASA 2915790

CNS Dream On L186  
**SVF Steel Force S701**  
SVF Sheza Beauty L901

Nichols Legacy G151  
CNS Sheeza Dream K107W

PVF-BF BF26 Black Joker  
SVF Sheza Lady J900

3C Mach M450 BZ

Meyer Ranch 734  
3C Crocus H112 B

**AJE/JF Ant Joys Elegance**

BHS JF Antoinettes Joy

HC Power Drive 88H  
NJC/TJF Joy

Full brother to Griswold & Yardley's GCC Nickles n Dimes. His dam was crowned Junior Show Champion in Denver. Universal is co-owned with Phil Lautner. EPD's BW 1.6, WW 60, YW 87, Milk 15.



*JAG Universal 115B*

# G

### OCC Bard 944B

Reg. Angus - AAA 18413661

OCC Great Plains 943G  
**OCC Work of Art 766W**  
OCC Dixie Erica 662J

N Bar Emulation EXT  
Dixie Erica of CH 1019

OCC Emblazon 854E  
OCC Dixie Erica 816B

OCC Eureka 865E

OCC Backstop 888B  
Blackbird of RR 1204

**OCC Dixie Erica 608W**

OCC Dixie Erica 816B

DHD Traveler 6807  
Dixie Erica of CH 1019

Bard is a double bred 816B. 816B is a full sister to Emblazon and the dam of Homer. EPD's BW 0.2, WW 32, YW 55, Milk 16.



*OCC Homer 650H*

# H

### FCC2 Corporal 552C

1/2 Simmental

GKS/SS Movin On X320  
**BWL Moving On 930A**  
J&C/SS Bernadette

LMF Movin Forward  
SS Magnificent Dreams

SS Goldmine L42  
THSF Queens Gal

OCC Unbelievable 851U

OCC Practical 841P  
OCC Pollyanna 944H

**FCC Revolution Rose 115Y**

FCC Revolution Rose 518U

OCC Premium 701P  
FCC Revolution Rose 987N

Corporal was the top bull in his calf crop and retained for in herd use. His sire is a direct son of the Bernadette cow family. His dam, 115Y, quite possibly may be the top cow residing at FCC after the foundation donors sell through this sale.

## LiveAuctions.TV

**Online bidding assistance:**

Real time online bidding will be available at [www.liveauctions.tv](http://www.liveauctions.tv). Bidders must pre-register on the LATV website and may watch and bid live via their high-speed internet connection.

Catalog designed by, Dwyer Cattle

# Foundation Cattle Co.

Production Sale

Sunday April 8, 2018 at 1:30 pm CST

Daviess County Livestock Market - Gallatin, MO



FCC